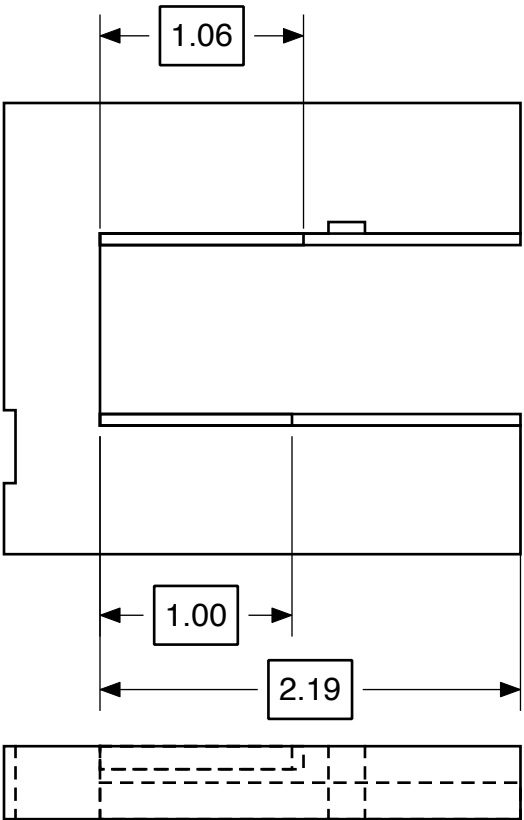


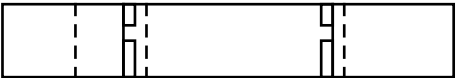
# ST-2 Payload Bay



## SensorTag Holder

Main piece cut from 3/8 inch balsa.  
see Payload Bay 1 for dimensions  
Form rails from 1/16 x 3/16 balsa strips,  
trim top rail to be flush with mail piece

Fit rails so the SensorTag fits snugly  
between them, trimming the top rail  
flush with the top of the main piece.



## Rails

Use router to form 1/8 x 3/8 groove in 1/4 inch  
thick balsa sheet, or form equivalent from 1/8  
inch balsa sheets glued to form groove.

Sand end to fit snugly. Nose cone  
should hold the rails firmly in place.

